



OSHPD (Optional)

*DESCRIPTION*

This **TOTALPAC®3** integrated fire protection system by FireFlex Systems Inc. consists of a **Firecycle®III** system trim totally pre-assembled, pre-wired and factory tested. All electrical and mechanical components of the system are contained in one single unit

**TOTALPAC®3 Firecycle®III** systems are built around the Viking trim using flow control valves model J-1.

**Firecycle®III** Deluge system uses open type sprinklers and / or spray nozzles in the sprinkler piping which totally flood an area with pressurized water. A detection network is used in parallel with the open type sprinkler / nozzles system. This network is electric and may be actuated by normally closed rate compensated heat detectors, or normally open manual pull station. When the detection system operates it gives an alarm and activates the flow control valve.

In addition to automatically detecting a fire and turning the system on, **Firecycle®III** has the added ability to sense when the fire has been controlled, and automatically turn off the water flow once a preprogrammed "Soak Timer" has been satisfied. Should the fire rekindle, the releasing control panel will initiate the sequence again. This unique **Firecycle®III** feature will repeat as long as power is available to the panel, helping to minimize water usage, water damage, and the danger of pollution to surrounding areas.

The **Firecycle®III** preaction system requires a VIKING VFR-400 releasing control panel

All the valves are rated up to a maximum of 250 psi WWP (1724 kPa) max. and are available in the following diameters:

- 1½" (40 mm)     2" (100 mm)     3" (80 mm)
- 4" (100 mm)     6" (150 mm)     8" (200 mm)

*Standard features*

- cULus Listed & FM Approved as an assembled unit
- Factory assembled and tested under ISO-9001 standards
- Prewired to a terminal block
- Easy and compact installation
- Viking conventional trim rated at 250 psi (1724 kPa)
- Galvanized trim piping
- Serial number for easy reference
- Corrosion resistant cabinet with flush type handle and lock
- No open drain cup inside the unit
- numerous modular options to meet the most demanding jobsite requirements
- Four styles of modular air supply options
- Inlet & outlet hydrostatic test ports
- User-friendly standardized operation & installation manual
- Free interactive simulator

### *Cabinet*

The TOTALPAC®3 cabinets are made of sturdy 14 gauge steel, they are available in four (4) sizes;

23" x 25" x 77" (58.4 x 63.5 x 195.6 cm) for 1½", and 2" systems,

36" x 25" x 77" (91.4 x 63.5 x 195.6 cm) for 3" and 4" system,

46" x 25" x 77" (116.8 x 63.5 x 195.6 cm) for 6" system

54" x 31" x 81" (137.2 x 78.7 x 205.7 cm) for 8" system

All surfaces are rust proof coated, inside and outside, with fire red, oven baked polyester powder on phosphate base. Cabinet is provided with one or two doors, all provided with a neoprene gasket to absorb vibrations.

A field wiring electrical junction boxes is integrated with the cabinet for connection of all electrical components in the trim. Pressure switches, supervisory switches, etc. are all factory wired to a terminal strip (TBA) for contractor's field wiring.

Gauges to indicate air, water supply pressure and priming water pressure are all visible through clear Lexan windows.

**IMPORTANT:** TOTALPAC®3 units are NOT designed to be installed where they will be subjected to outdoors and/or freezing conditions. Refer to environmental data for additional details. Subjecting the unit to conditions outside these limitations might tamper the normal operation of the system.

The cabinet assembly is pre-assembled, pre-wired, and factory tested under ISO-9001 conditions.

Multiple unit installations are easily achieved by manifolding units together at their water inlets but drains shall remain separate and open.

### *Sequence of operation (see trim diagram)*

In a fire condition, when the detection condition is satisfied, system releasing control panel (supplied by others) activates an alarm and energizes normally closed Solenoid valve (F2) open and normally open solenoid valve (F1) closed.

Pressure is released from the priming chamber of the flow control valve (A1) to the open drain manifold faster than it is supplied through the restricted orifice (B3). The flow control valve clapper opens to allow water to flow into the system piping and alarm devices, causing the alarm pressure switch (C1) and optional water motor alarm (C2) to activate. Water will flow from all the open sprinklers and/or nozzles in the system.

When the flow control valve operates, the PORV (B9) is pressurized, causing it to latch open. Water discharges until all **Firecycle®III** detectors have reset (cooled below their set point). After all detectors have reset, the **Firecycle®III** releasing control panel activates the soak timer, allowing the system to flow water for a pre-determined period of time. When the soak timer has elapsed, the releasing control panel de-energizes the normally closed solenoid valve (F2), allowing it to close (the normally open solenoid (F1) remains energized closed until the system is manually reset or all power (both AC and batteries) is lost). The flow control valve re-priming and closes, stopping the flow of water through the piping system. Should a **Firecycle®III** detector go into alarm, the releasing control panel reenergizes the normally closed solenoid valve (F2) open, and the entire cycle repeats.

*Systems hydraulic limitations*

**WARNING** The information contained herewith is for estimation and evaluation purposes only. Its use remains the responsibility of the designer.

Designers should refer to the appropriate NFPA Standards and any other applicable codes for their final design.

System size (in.)	Usage Range (gpm)	Piping Equivalent Lengths w/o shut off valve		Piping Equivalent Lengths c/w shut off valve	
		(m.)	(ft.)	(m.)	(ft.)
1½	0 – 210	8.3	27.2	8.5	27.9
2	0 – 360	11.65	38.2	11.85	38.9
3	100 - 700	16.8	55.1	20.33	66.7
4	200 – 1400	21.89	71.8	25.33	83.1
6	400 - 3500	33.28	109.15	37.28	122.3
8	750 - 5250	41.15	135	44.71	146.7

**System drain flow:**

System size	USGPM Formula
1½" & 2"	0.5 x (water pressure Psi) + 65 = USGPM
3"	1.2 x (water pressure Psi) + 130 = USGPM
4", 6" & 8"	2.7 x (water pressure Psi) + 215 = USGPM

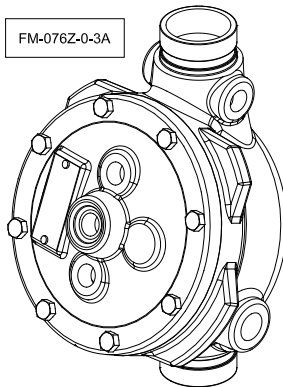
System size	LPM Formula
1½" & 2"	2 x (water pressure Psi) + 235 = LPM
3"	4 x (water pressure Psi) + 490 = LPM
4", 6" & 8"	10 x (water pressure Psi) + 800 = LPM

*Standard equipment*

**Flow control valve**

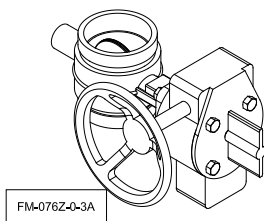
The Viking flow control valve is a quick opening, differential type flood valve with a spring loaded rolling diaphragm clapper. The flow control valve can be used to facilitate manual or automatic on/off control. The Viking flow control valve is an integral part of the Viking Firecycle® System.

The valve is held closed by system water pressure trapped in the priming chamber, keeping the outlet chamber and system piping dry. In fire conditions, when the releasing system operates, pressure is released from the priming chamber. The flow control valve clapper opens to allow water to flow into the system piping.



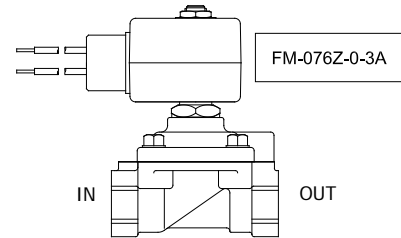
**Water supply control valve**

The water inlet control valve is a supervised, indicating butterfly valve. Purpose of this valve is to manually shutoff the preaction system.



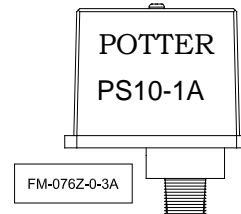
**Solenoid valve**

The high pressure solenoid valve is a two-way type with one inlet and one outlet. It is a packless, internal pilot operated valve, suitable for use in releasing water pressure from the priming chamber of Viking flow control valves. The solenoid valve has floating diaphragm construction, which requires a minimum pressure drop across the valve to operate properly.



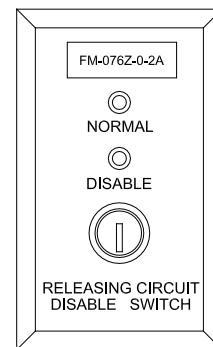
**Alarm pressure switch**

The alarm pressure switch monitors the water flow within the sprinkler piping. Should the Deluge Valve clapper opens to allow water to flow into the sprinkler piping. The alarm pressure switch will activate, indicating a water flow signal.



**Releasing circuit disable switch**

The releasing circuit disable switch is used to disable the releasing solenoid. When the key is set to "Disable", the releasing solenoid will be disconnected from the control panel's releasing circuit, causing a trouble signal and preventing accidental discharge during maintenance or inspection.



*Optional mechanical equipment*

❑ **Shut-off valve & sight glass option**

The Shut-off valve & sight glass option is intended to be used for applications where testing of the system operation without filling the sprinkler piping network is desirable and where it is critical that all functions of the preaction system be tested under actual discharge conditions. Examples of such applications are freezers, ovens, museums, data processing and other hazards where the possibility of water leaking from the piping system is to be avoided at all costs.

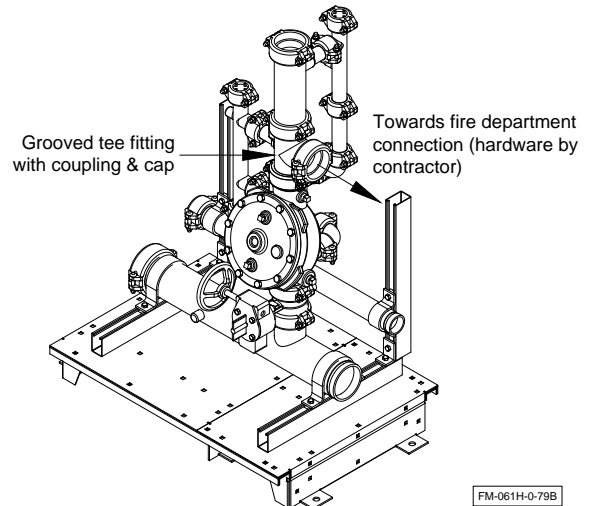
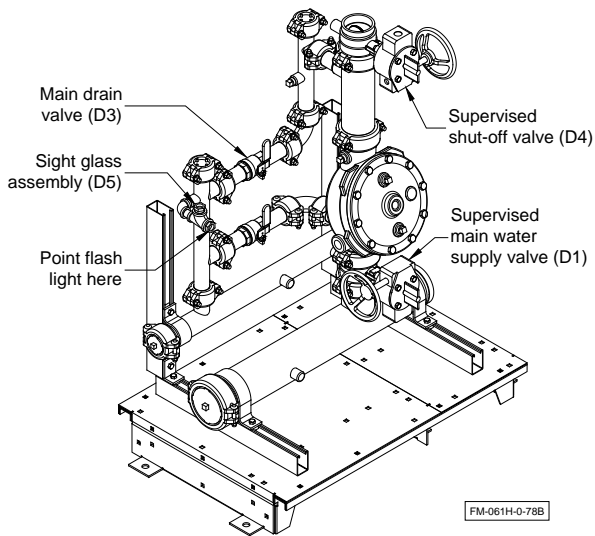
**Warning:** Shut-off valve & sight glass option is **not available** on 8" systems.

❑ **Fire department connection**

The fire department connection option consists of a grooved tee fitting installed at the outlet of the deluge valve (A1). An access hole of the proper diameter is factory pre-drilled on the side of the **TOTALPAC®3** enclosures for connection of the piping going to the fire department connection.

**Note:** The fire department connection hardware itself (drain, Siamese, etc.) is **NOT** provided with this option and shall be provided by the installing contractor. Refer to NFPA-13 Standard for additional information about the equipment layout and installation.

**Warning:** Fire department connection is **not available** on 8" systems.



*Optional mechanical equipment (continued)*

❑ **Semi and full flanged option**

When required by the user, TOTALPAC®3 units can be provided in either a semi-flanged or full flanged configuration.

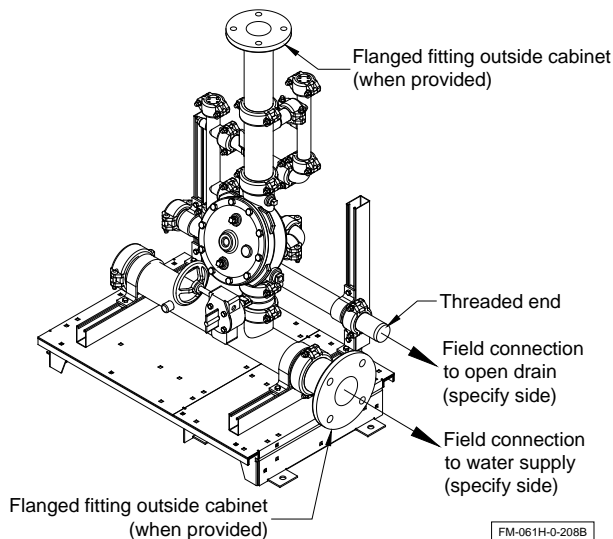
The semi flanged option provides flanged fittings only on the water inlet pipe (side needs to be specified at the time of order) and on the system riser outlet. The drain manifold is then provided with a threaded end that also needs to have its side specified (left or right). The rest of the fittings are the same as usual with the main components being provided in the standard grooved-grooved configuration.

The full flanged option is the same as above but goes a step further with the main components being also provided with a flanged-flanged configuration.

When provided, the face of the flanges will always be situated 6 inches from the outside face of the mounting base or cabinet surface. On skid units, the surface of the flange on the outlet riser will always be 6 inches above the dimension shown on the dimensional data of the system ordered.

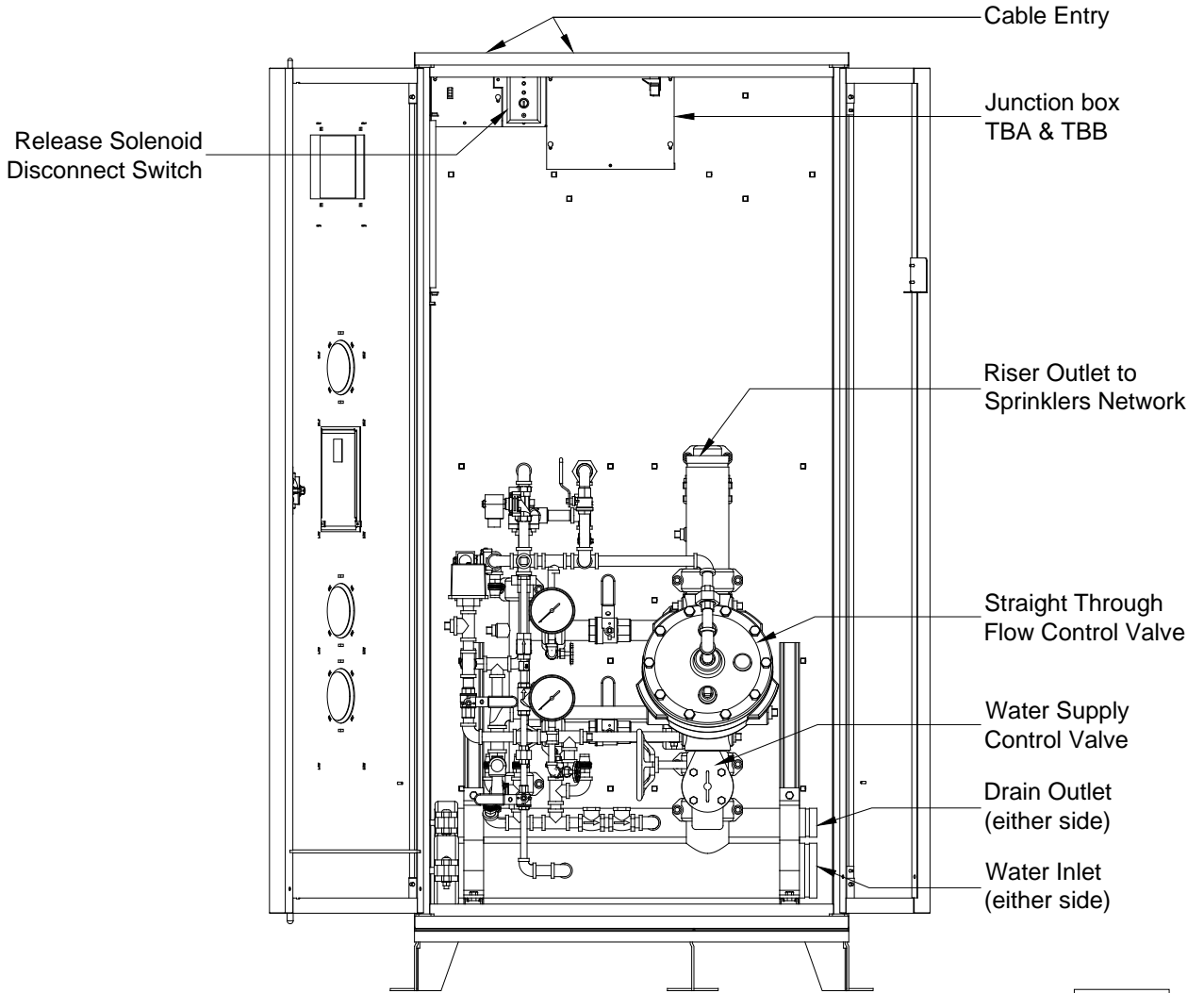
❑ **OSHPD option**

Pre-approved construction, under OSP-0341-10, using specific components.

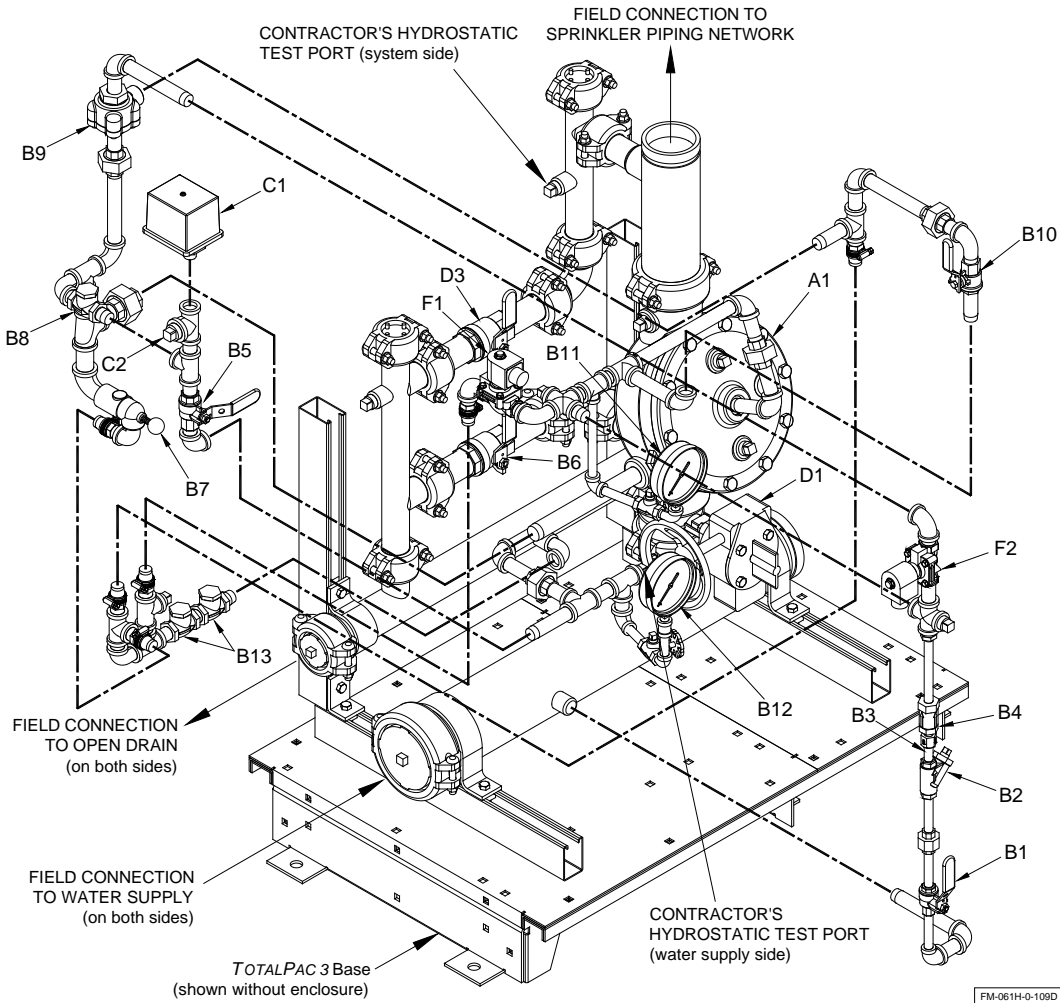


*Details & field wiring diagrams*

**Cabinet with main components - Configuration without releasing control panel**



**Trim diagram**



**Trim Components:**

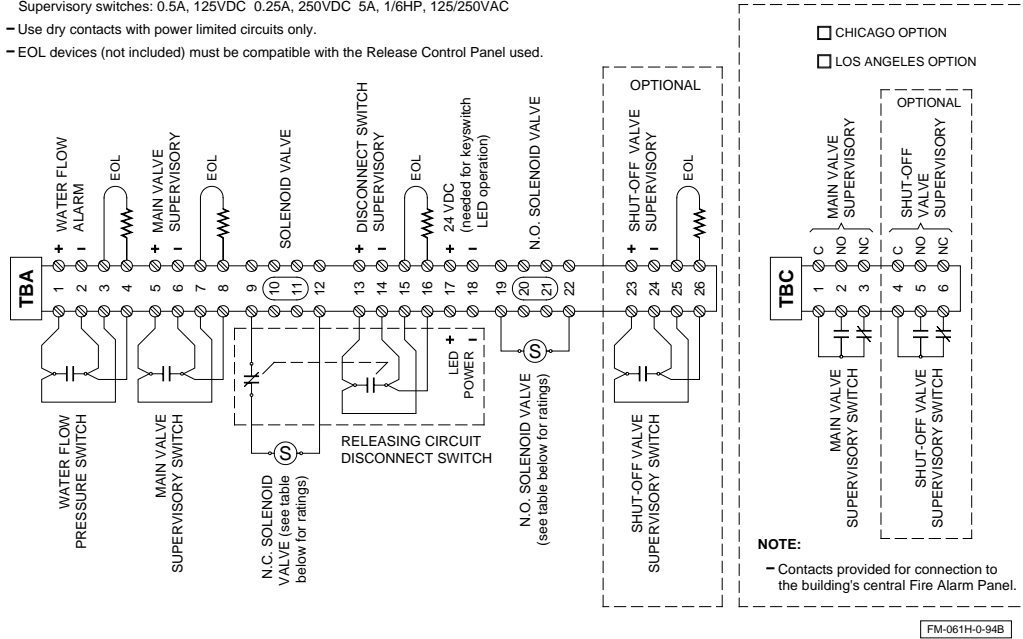
A2	Flow control valve	C1	Alarm pressure switch
B1	Priming valve	C2	Connection to water motor gong (strainer supplied by contractor)
B2	Strainer	D.	Valve:
B3	1/8" Restricted orifice	D1	Water supply control valve
B4	Spring loaded check valve	D3	Main drain valve
B5	Alarm test valve	F1	N.O. Solenoid valve – 24Vdc
B6	Flow test valve	F2	N.C. Solenoid valve – 24Vdc
B7	Drip check valve		
B8	Drain check valve		
B9	Pressure operated relief valve (PORV)		
B10	Emergency release valve		
B11	Priming pressure water gauge & valve		
B12	Water supply pressure gauge & valve		
B13	Clapper check valve		



**Field wiring diagrams, Single interlock Electric, Self-Contained:**

**NOTES:**

- All devices are factory wired.
- All devices are shown in their normal supervisory state.
- Contacts are rated:  
Pressure switches: 2A, 30VDC 10A, 125/250VAC  
Supervisory switches: 0.5A, 125VDC 0.25A, 250VDC 5A, 1/6HP, 125/250VAC
- Use dry contacts with power limited circuits only.
- EOL devices (not included) must be compatible with the Release Control Panel used.



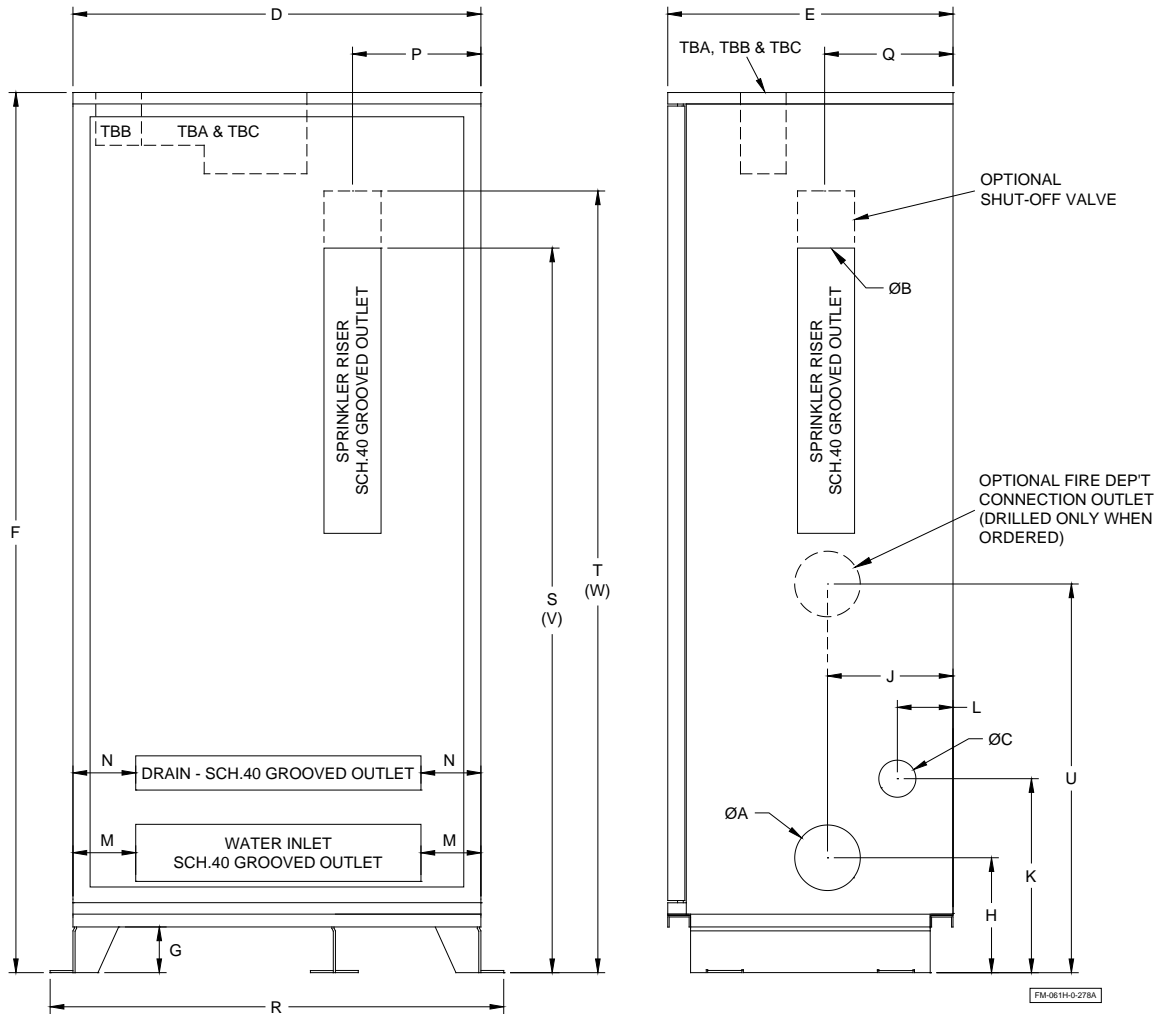
SOLENOID VALVE ELECTRICAL RATINGS					
Viking P/N	Operation (de-energized)	Voltage	Watts	DC amps	Pressure rating
11591	N.C.	24VDC	10 WDC	416 mA	300 PSI (2068 kPa)
11595	N.O.	24VDC	10 WDC	416 mA	300 PSI (2068 kPa)

**Notes:**

1. Solenoid valve is UL Listed as Fire Protection Special System Water Control Release Service (UL 429A Product category VLTR).
2. Voltage drop: For proper operation, make sure that voltage at the solenoid valve is at least 85% of nameplate rating.

*Dimensions and weights*

**Figure 1 – Cabinet dimensions:**



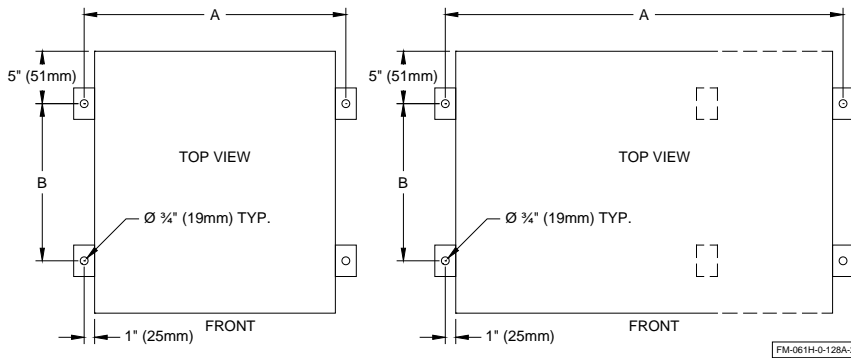
**Table 1 - Cabinet dimensions - dimensions are in inches (mm)**

Unit size	A	B	C	D	E	F	G	H	J	K	L	M	N	P	Q	R	S	T	U	V	W
<b>1½" (40)</b>	2" (51)	1½" (38)	2" (51)	23" (584)	25" (635)	77" (1956)	4" (102)	8¾" (222)	11½" (292)	13¾" (349)	3¾" (95)	2¾" (70)	2¾" (70)	8" (203)	11½" (292)	27" (686)	43" (1092)	47" (1194)	34¼" (870)	48½" (1232)	52½" (1334)
<b>2" (50)</b>	2" (51)	2" (51)	2" (51)	23" (584)	25" (635)	77" (1956)	4" (102)	8¾" (222)	11½" (292)	13¾" (349)	3¾" (95)	2¾" (70)	2¾" (70)	8" (203)	11½" (292)	27" (686)	45¼" (1149)	49¼" (1251)	34¾" (883)	51¾" (1314)	55¾" (1232)
<b>3" (80)</b>	4" (102)	3" (76)	2" (51)	35¾" (908)	25" (635)	77" (1956)	4" (102)	10" (254)	11½" (292)	13¾" (349)	3¾" (95)	2¾" (70)	2¾" (70)	11¾" (298)	11½" (292)	39¾" (1010)	44" (1118)	47¾" (1213)	37" (940)	51" (1295)	54¾" (1391)
<b>4" (100)</b>	4" (102)	4" (102)	2" (51)	35¾" (908)	25" (635)	77" (1956)	4" (102)	10" (254)	11½" (292)	13¾" (349)	3¾" (95)	2½" (64)	2½" (64)	12" (305)	11½" (292)	39¾" (1010)	48½" (1232)	53¼" (1353)	42" (1499)	56½" (1435)	61¼" (1556)
<b>6" (150)</b>	6" (152)	6" (152)	2" (51)	46" (1168)	25" (635)	77" (1956)	4" (102)	11" (279)	11½" (292)	13¾" (349)	3¾" (95)	5¼" (133)	5¼" (133)	17¾" (451)	11½" (292)	50" (1270)	59½" (1511)	65¼" (1657)	51½" (1308)	70½" (1791)	76¼" (1937)
<b>8" (200)</b>	8" (203)	8" (203)	2" (51)	54" (1372)	31" (787)	81" (2057)	4" (102)	12" (305)	13¾" (337)	17" (432)	3¾" (95)	9" (229)	6¾" (171)	27" (686)	13¾" (337)	58" (1473)	70" (1778)	75¼" (1911)	N/A	N/A	N/A

**Notes:**

1. Dimensions are nominal and may vary ±¼" (±5mm).
2. Dimensions U, V & W are for optional fire department connection.

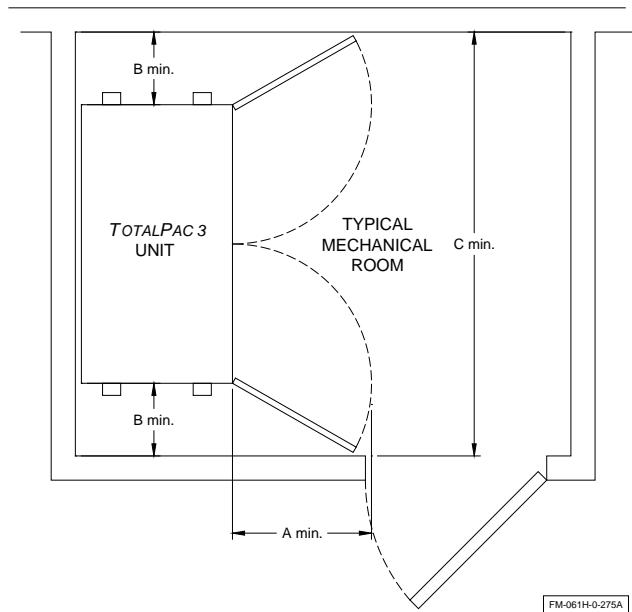
**Figure 2 - Floor anchoring dimensions**



**Table 2 - Floor anchoring dimensions**

Unit size	A	B
1½" (40mm)	25" (635mm)	15" (380mm)
2" (50mm)	25" (635mm)	15" (380mm)
3" (80mm)	37¾" (959mm)	15" (380mm)
4" (100mm)	37¾" (959mm)	15" (380mm)
6" (150mm)	48" (1220mm)	15" (380mm)
8" (200mm)	56" (1422mm)	21" (530mm)

**Figure 3 - Cabinet & doors clearance detail**

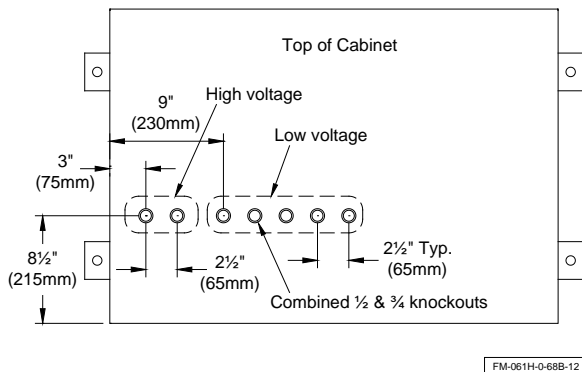


**Table 3 - Cabinet clearance dimensions**

Unit size	A	B	C
1½" (40mm)	24" (610mm)	12" (305mm)	48" (1219mm)
2" (50mm)	24" (610mm)	12" (305mm)	48" (1219mm)
3" (80mm)	24" (610mm)	12" (305mm)	60" (1524mm)
4" (100mm)	24" (610mm)	12" (305mm)	60" (1524mm)
6" (150mm)	24" (610mm)	12" (305mm)	70" (1778mm)
8" (200mm)	32" (813mm)	12" (305mm)	78" (1981mm)

**Note :** Minimum dimensions are according to door clearance and external piping requirements.

**Figure 4 - Knockouts details**

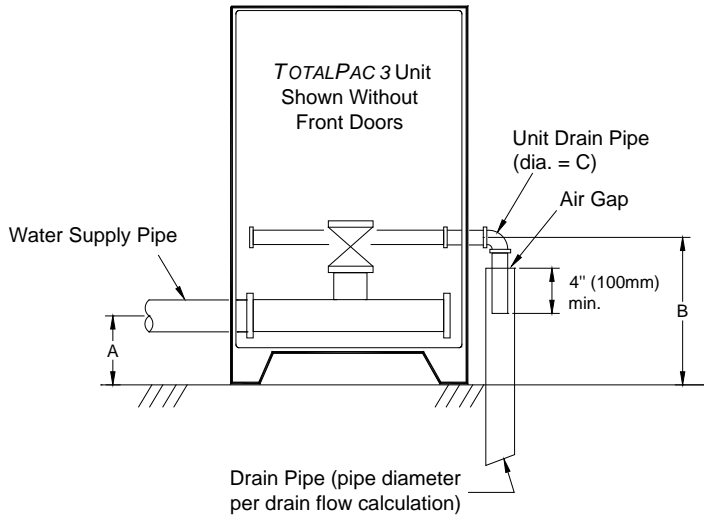


**T Table 4 - System weight in cabinet**

System size	Weight <sup>1</sup>
1½" (40mm)	460 lb (209 kg)
2" (50mm)	465 lb (211 kg)
3" (80mm)	740 lb (336 kg)
4" (100mm)	755 lb (342 kg)
6" (150mm)	1035 lb (469 kg)
8" (200mm)	1485 lb (674 kg)

(1) Without air compressor.

**Figure 5 - Open drain details for single unit**



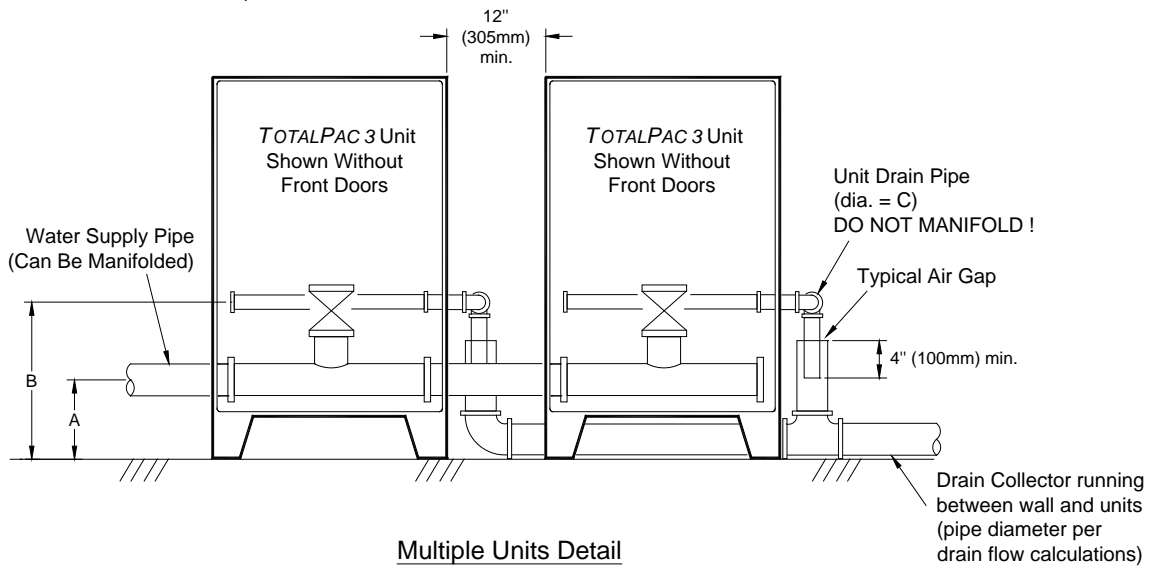
**Single Unit Detail**

FM-061H-0-139A

**Table 5 - Manifold dimensions**

Unit size	A	B	C
1½ (40mm)	8¾" (222mm)	13¾" (350mm)	2" (50mm)
2" (50mm)	8¾" (222mm)	13¾" (350mm)	2" (50mm)
3" (80mm)	10" (255mm)	13¾" (350mm)	2" (50mm)
4" (100mm)	10" (255mm)	13¾" (350mm)	2" (50mm)
6" (150mm)	11" (280mm)	13¾" (350mm)	2" (50mm)
8" (200mm)	12" (305mm)	17½" (445mm)	2" (50mm)

**Figure 6 - Open drain details for multiple units**  
(refer to dimensions in table 5)



**Multiple Units Detail**

FM-061H-0-140A

**Notes:**

1. Water supply and drain pipes can be connected on either sides of cabinet.
2. All pipes and fittings should meet applicable codes.
3. Actual drain collector diameter shall be determined with detailed hydraulic calculations and is the responsibility of the system designer.



TotalPac®3  
Firecycle III Deluge  
Remote controlled system



**ADVANCED INTEGRATED FIRE PROTECTION SYSTEMS**

*1935, Lionel-Bertrand Blvd.  
Boisbriand QC Canada J7H 1N8  
Tel.: 450-437-3473 • Fax: 450-437-1930  
Toll Free: 866-347-3353  
Email: [info@fireflex.com](mailto:info@fireflex.com) • Web: [www.fireflex.com](http://www.fireflex.com)*

**Copyright © 2019 FireFlex Systems Inc.**

All Rights Reserved

While all reasonable efforts have been taken in the preparation of this datasheet to assure its accuracy, FireFlex Systems Inc assumes no liability resulting from any errors or omissions in this datasheet, or from the use of the information contained herein.

FireFlex Systems Inc. reserves the right to make changes to this datasheet herewith at any time, without prior notification.

TOTALPAC® is a registered trademark of FireFlex Systems Inc.